

BLAST LIGHT



Better Visibility - Better Blasting

This premium light is Available with a 20w or 35w halogen bulb and features a very tough cast aluminum housing. The Blast Light operates on low voltage (12VDC) and is available with a 120VAC converter for use with standard wall outlet voltage.



12V BLAST LIGHT ASSYS

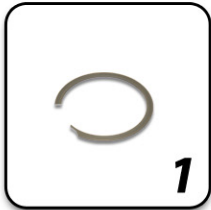
LITE100	BLAST LIGHT COMPLETE, 12V, HALOGEN, 20W, 10' CORD
LITE200	BLAST LIGHT COMPLETE, 12V, HALOGEN, 35W, 10' CORD



120V BLAST LIGHT ASSYS

LITE100-075	BLAST LIGHT COMPLETE, W/120VAC TO 12VDC CONVERTER, HALOGEN, 20W , 75' CORD
LITE100-125	BLAST LIGHT COMPLETE, W/120VAC TO 12VDC CONVERTER, HALOGEN, 20W , 125' CORD
LITE100-150	BLAST LIGHT COMPLETE, W/120VAC TO 12VDC CONVERTER, HALOGEN, 20W , 150' CORD
LITE200-075	BLAST LIGHT COMPLETE, W/120VAC TO 12VDC CONVERTER, HALOGEN, 35W , 75' CORD
LITE200-125	BLAST LIGHT COMPLETE, W/120VAC TO 12VDC CONVERTER, HALOGEN, 35W , 125' CORD
LITE200-150	BLAST LIGHT COMPLETE, W/120VAC TO 12VDC CONVERTER, HALOGEN, 35W , 150' CORD

Replacement Parts



LITE101

BLAST LIGHT, OUTER LENS RETAINING CLIP

1



LITE105

BLAST LIGHT, LAMP SOCKET

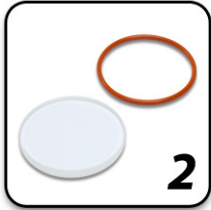
4



7117-504

STRAIN RELIEF FITTING

6



LITE102

BLAST LIGHT, PYREX LENS, INCLUDES O-RING

2



LITE106

BLAST LIGHT, BODY ONLY, INCLUDES HOSE MOUNT BRACKET AND BUMP RING

5



10-203

CONTROL CORD, 16.2, 2 WIRE

7



LITE286

BLAST LIGHT, 20 WATT REPLACEMENT BULB

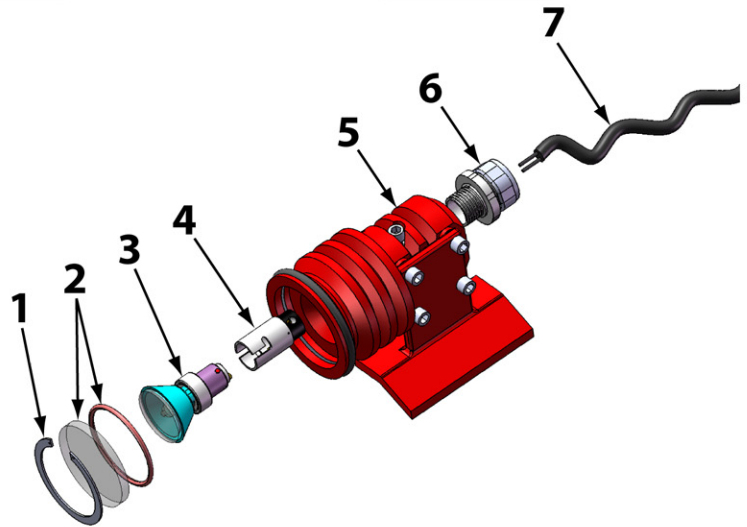
3



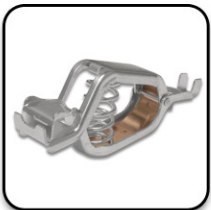
LITE284

BLAST LIGHT, 35 WATT REPLACEMENT BULB

3



Commonly Purchased With



7110-024

ALLIGATOR CLIP (2 REQUIRED)



PB-31131

1/2" 3 PART SEALED CONTROL CORD CONNECTOR



7111-261

INSULATOR, RED



7111-262

INSULATOR, BLACK

Proudly Distributed By:

