




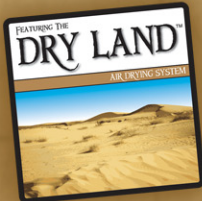




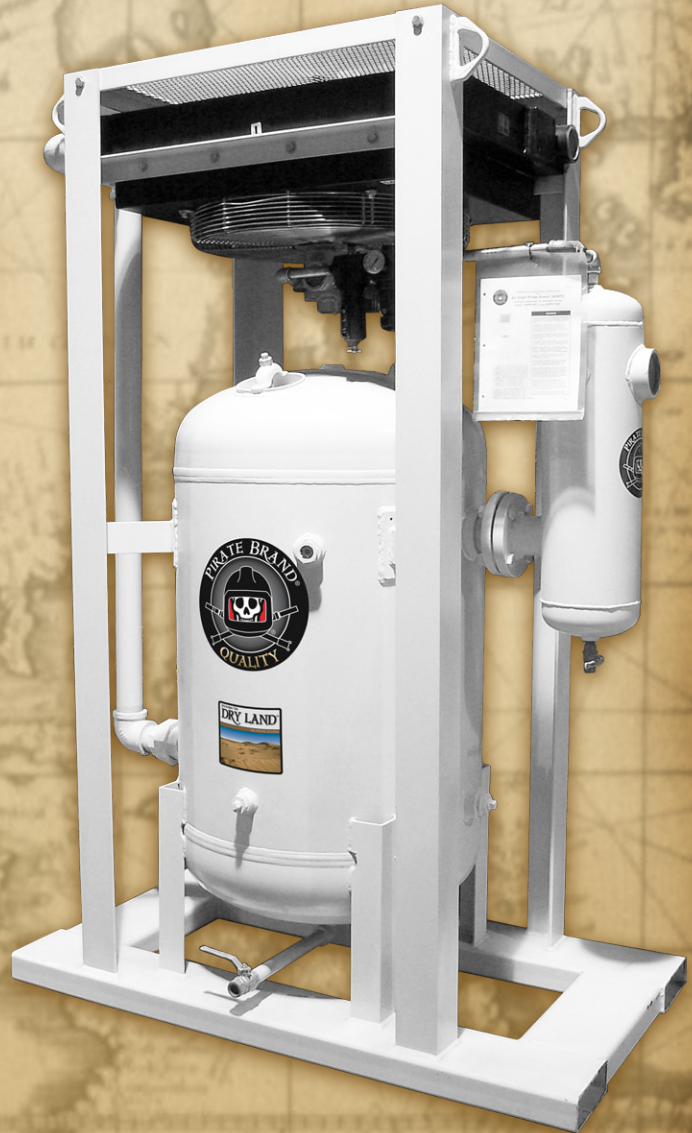
AIR DRYERS

"Let Us Help You Find Your Way to Dry Air."

-  Increase Blasting Profitability
-  Eliminate Flash Rusting, Clogged Blast Pots and Downtime
-  Small Footprint
-  Complete Portability
-  Low System Pressure Drop



FREE INITIAL
DESICCANT FILL



MOISTURE SEPARATORS

Available in 800CFM & 1600CFM
Sizes For Both
Portable & Stationary Applications.



ADPB-250

Up to 359 SCFM
@ 150 PSIG



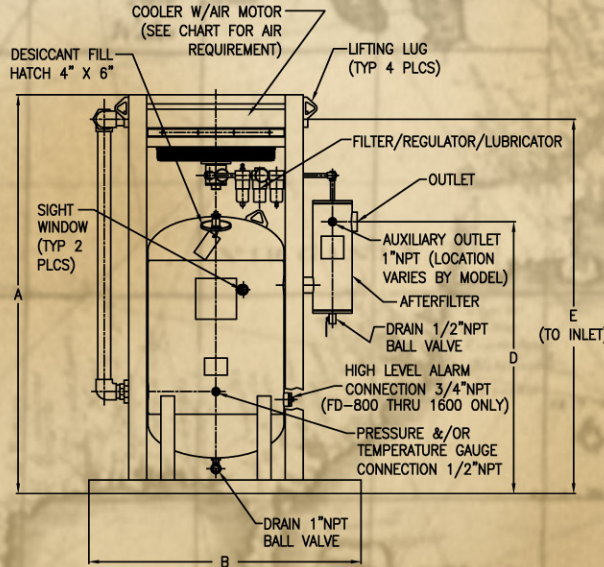
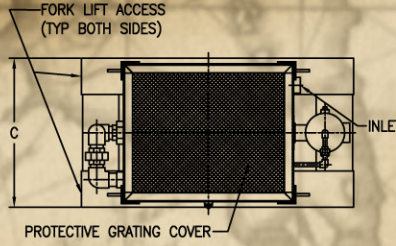
ADPB-400

Up to 574 SCFM
@ 150 PSIG



ADPB-750-950

Up to 974 SCFM
@ 150 PSIG



ADPB-1200

Up to 1723 SCFM
@ 150 PSIG



ADPB-1600

Up to 2297 SCFM
@ 150 PSIG

Model Number	ADPB-250	ADPB-400	ADPB-750-950	ADPB-1200	ADPB-1600
Part Number	1310-021	1310-041	1310-071	1310-121	1310-161
SCFM Rating	Up to 359 SCFM @ 150 PSIG	Up to 574 SCFM @ 150 PSIG	Up to 1149 SCFM @ 150 PSIG	Up to 1723 SCFM @ 150 PSIG	Up to 2297 SCFM @ 150 PSIG
(A) Height	77"	77"	83-3/4"	88"	94-1/2"
(B) Depth	27"	26"	32-7/8"	32-7/8"	43"
(C) Width	48"	49"	54"	60"	71-1/2"
(D) Outlet Height	58-1/2"	58-9/16"	59-1/2"	60"	59-1/8"
(E) Inlet Height	71-9/16"	72-1/8"	78-3/8"	82-5/8"	89-3/8"
Inlet Size	1-1/2" NPT(F)	2" NPT(F)	2-1/2" NPT(F)	2-1/2" NPT(F)	3" NPT(F)
Outlet Size	1-1/2" NPT(F)	2" NPT(F)	2-1/2" NPT(F)	3" NPT(F)	3" NPT(F)
Weight	680 Lbs.	760 Lbs.	1155 Lbs.	1525 Lbs.	1875 Lbs.
Air Motor SCFM	17	25	70	70	150
Desiccant Fill	250 lbs.	400 lbs.	500 lbs.	750 lbs.	1000 lbs.

PRODUCT FEATURES

- ✘ Steel Skid Forklift Channels and Lifting Lugs for Portability
- ✘ Air Motor Includes Filter, Regulator, Lubricator and Muffler
- ✘ Epoxy Internal Dryer Coating for Long Vessel Life
- ✘ Downstream Particulate Filter with Permanent Stainless Steel Mesh
- ✘ Two Dryer Sight Windows for Desiccant Level Viewing

Distributed By:

